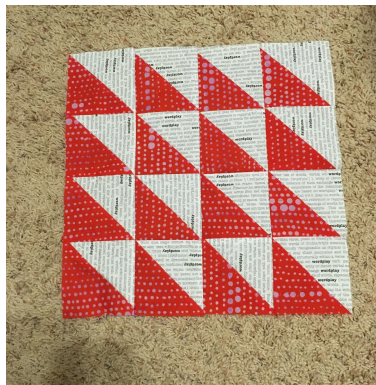


# BNMQG

## Block Lotto

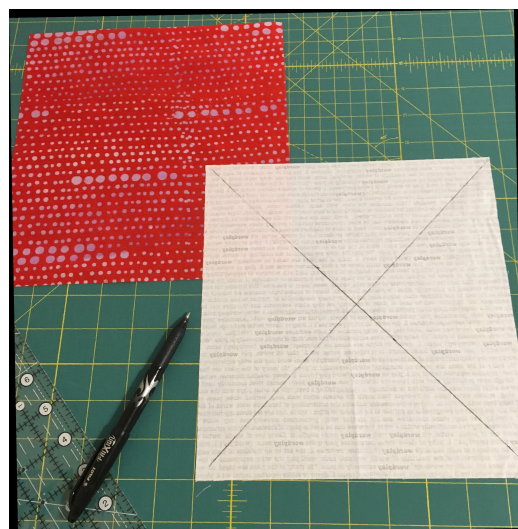
April 2019

### Eight in One Half Square Triangles/ 16 patch

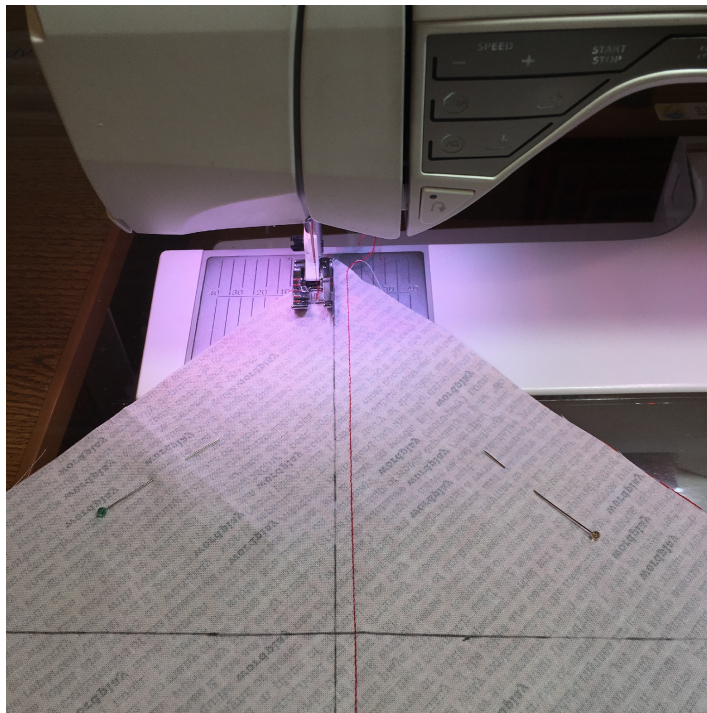


Fabric needed: Two red 8 3/4" squares and two white low volume 8 3/4" squares.

1. To make the Half Square Triangles 8 at a Time place one Red 8 3/4 " square of fabric and one Low Volume 8 3/4" square Right Sides Together (RST). It is much easier with this method, to make the squares Mark a diagonal line across both diagonals on the wrong side of the white fabric square.

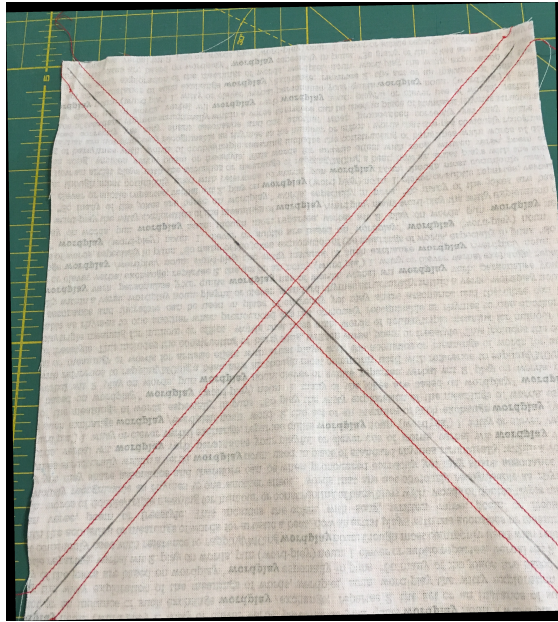


2. Sew a scant 1/4in seam on both sides of the marked diagonal lines.

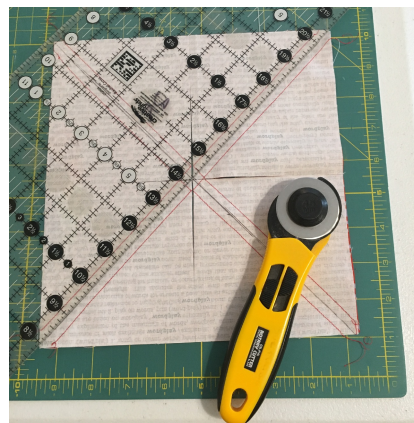
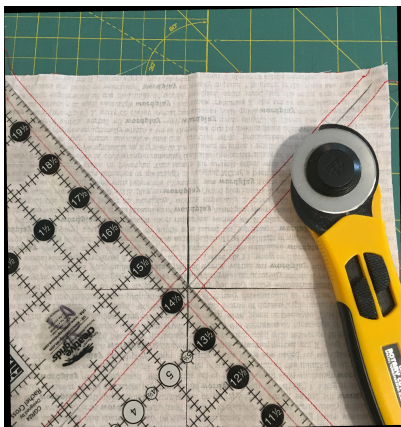
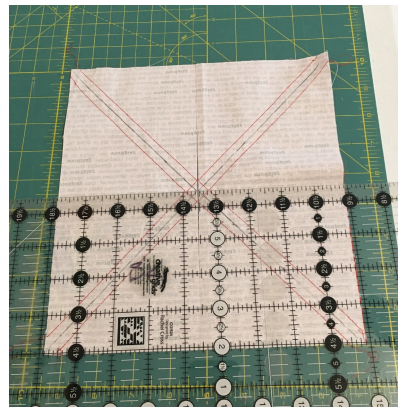
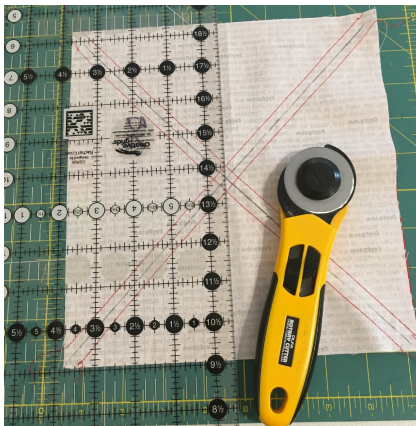




Your Block should look like this before you cut it into 8 pieces.



3. Using your rotary blade, cut the square in half vertically. Then cut a horizontal line, and then cut on both diagonal lines lining up your ruler right on the line you drew earlier..



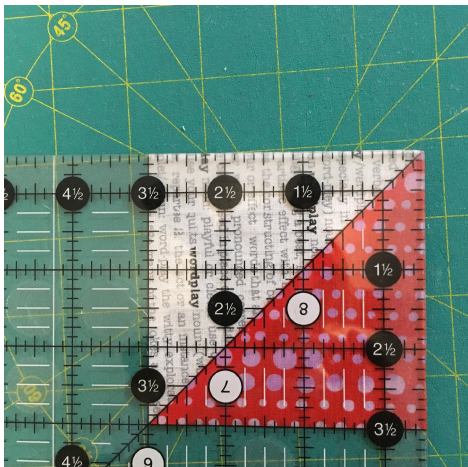
4. You will now have 8 Half Square Triangle Blocks.



5. Press each HST to the dark side of the unit. In this case, press the seam toward the red fabric,.



6. Trim each unit to 3 1/2" square. THEN REPEAT STEPS 1-6





7. Once you have all your 16 units done you will arrange them in a 4x4 grid.,



8. Sew together in rows and you are done!!

#### THE FINE PRINT

- Blocks must be made of quilt shop quality, modern fabric.
- Blocks should be 12.5 inches square...MUST BE within 1/4 inch.
- You may make as many blocks as you'd like! Each block gets one entry into the drawing. There is a \$1/block entry fee paid to the guild.
- If there are more than 24 blocks, we will split the pile in half and draw 2 names

If you have questions please call 309-264-1319 or email me at [suekaiser826@gmail.com](mailto:suekaiser826@gmail.com)

