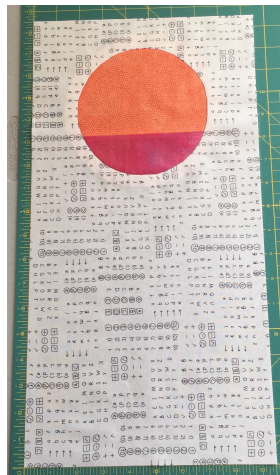


# BLOCK LOTTO



## ZEN SUNRISE BLOCK

\*All fabric used should be modern\*

**Background fabric:** Black and white text fabric or low volume

**Main fabric:** Choose 2 fabrics that represent sunrise colors (yellow, orange, red, pink) Can be solid or prints

### STEP ONE:

Background fabric: Cut a rectangle 9.5 inches by 18.5 inches

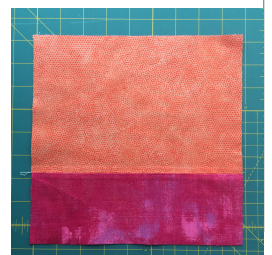
Main fabric #1: Cut a rectangle 6.25 inches by 9 inches

Main fabric #2: Cut a rectangle 3.25 inches by 9 inches.



### STEP TWO:

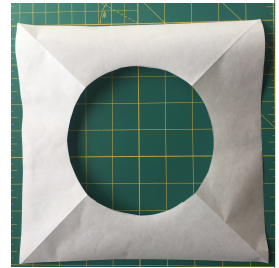
Sew the two main fabrics together, pressing the seam open.



**STEP THREE:**

Cut a 9 inch square out of freezer paper. Draw a circle using a bowl, compass, or anything around the house that is the right size. Make sure you leave at least 1 inch margins between the edge of your circle and the edge of the paper.

Then cut out the center on the line you just drew.

**STEP FOUR:**

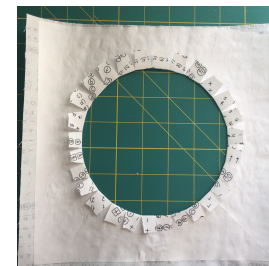
Iron the prepped freezer paper onto the background fabric. Do not place it dead center. It should be towards the top or bottom of your rectangle.

Cut the fabric out of the center leaving at least 1/2 inch fabric from edge of freezer paper.

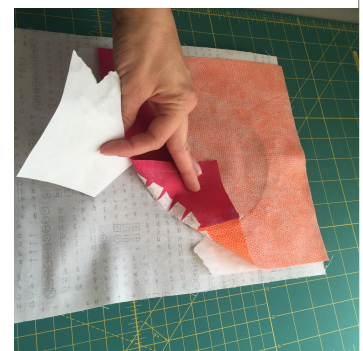
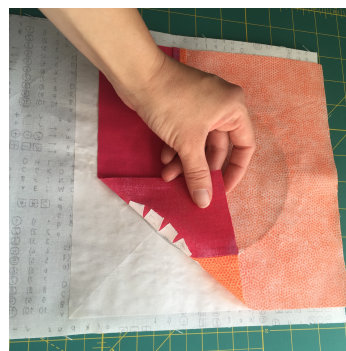
**STEP FIVE:**

Cut tabs up to the edge of the freezer paper ever 1/2 inch or so. Using a glue stick (Elmer's washable is just fine) glue the tabs down to the freezer paper and iron to set the glue.

Now, use the glue stick on the top of each tab (quickly so it doesn't dry before you're done) and then center your main fabric block over it, face down. Iron to set the glue.

**STEP SIX:**

Pull a corner of the main fabric back, making sure that the white tabs are sticking to the main fabric and pulling away from the freezer paper. Then carefully pull the freezer paper off completely.

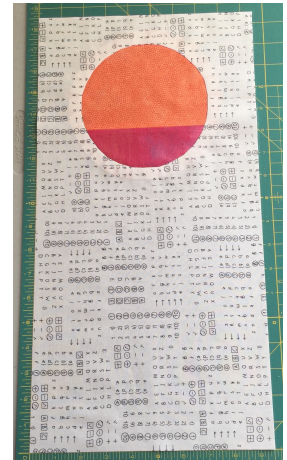
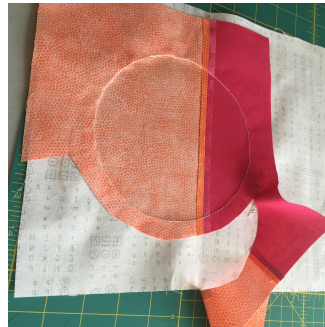


**STEP SEVEN:**

Flip your block over so that it is right side up. Sew the tabs down to the main fabric by stitching directly where the tabs fold over.

**STEP SEVEN:**

Trim the main fabric to 1/4 inch from the seam. Flip your block over and iron. You did it!

**GENERAL RULES:**

- Blocks must be made of quilt shop quality, modern fabric.
- Blocks should be 9.5 x 18.5 inches...MUST BE within 1/4 inch.
- You may make as many as you'd like this month. Each block gets one entry into the drawing. There is a \$1/block entry fee paid to the guild.
- If there are more than 24 blocks, we will split the pile in half and draw 2 names
- Please label your block with your name. (You may use an address label)
- If you have previously won, you must bring your FINISHED quilt made from your winning blocks in order to be eligible to win again. You may still contribute to the pool each month, if you'd like.